



Our Mission

ActiveSGV's mission is to support a more sustainable, equitable, and livable San Gabriel Valley.



Our Vision

ActiveSGV envisions a San Gabriel Valley where:

- People of all ages, incomes, abilities and backgrounds have the opportunity to thrive.
- Decision-making accounts for the needs of current and future generations.
- Local and regional investments help address our most pressing challenges, including climate change, housing affordability, and inequity.
- Elected leadership reflects and accurately represents one of the United States' most diverse regions.
- Communities pilot best practices in public policy, health, sustainability and governance.



Bike Friendly Business District

Bicycle Friendly Business Districts (BFBDs) promote, encourage, and incentivize residents and visitors to make local trips by bike, on foot, or via transit.

- Glendora
- South Pasadena
- Baldwin Park
- El Monte
- South El Monte





SGV Bicycle Education Center

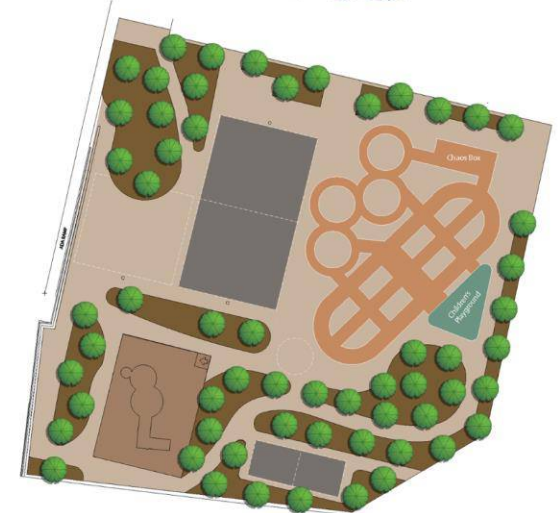
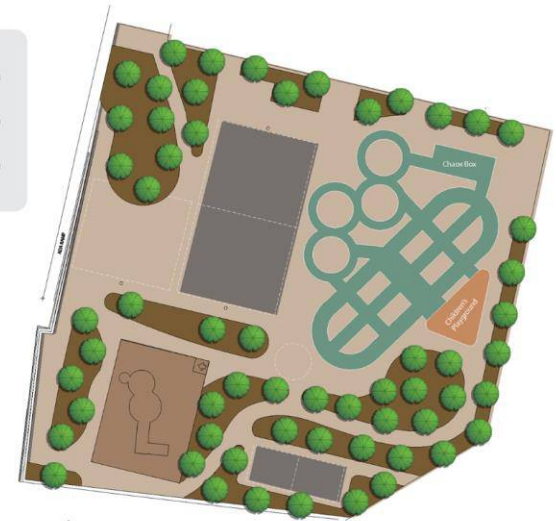


- Free bicycle repair, commuting, and learn-to-bike classes



SGV Bike Campus

- Safe space for children & families to learn to bike
- First in the San Gabriel Valley
- Part of urban campus greening







Women on Wheels

- Developing leaders
- Engaging families
- Promoting safety



Encourage, engage and promote more women of all ages, backgrounds, and abilities to bicycle in the San Gabriel Valley.



Open Streets / Ciclovía Events

- Encourage healthy, active transportation
- Introduce residents to public transit
- Foster community
- Support local businesses
- Create temporary open space



#626GoldenStreets

- 18.5 miles of open streets, connecting 6 Gold Line stations
- Walk, Run, Bike, Skate, Scoot, Food, Arts, Music
- FREE to the public



6•26

GOLDEN STREETS

Inaugural Event - March 5, 2017

- **8 communities, 6 Gold Line Stations** - South Pasadena, San Marino, Arcadia, Monrovia, Duarte, Irwindale, Azusa and parts of unincorporated Los Angeles County. **Our event was the 9th longest open streets event in the world.**



Diane Velez, MPH

Healthy Communities Director

diane@ActiveSGV.org



Active SGV and SGV Bicycle Education Center

10900 Mulhall Street

El Monte, CA 91731

www.ActiveSGV.org

@ActiveSGV #ActiveSGV